

DECEMBER 2023

Yallambee

BUZZ

A Monthly Newsletter by Yallambee Traralgon Village for the Aged Inc.
Margery Cole Residential Care Service



This Month

All Things Christmas

Star Rating

Resident & Staff Spotlight

Margery Cole & Village News

Staff News

Activity Calendar

Upcoming Events



Christmas Lights

On the night of Wednesday, 20 and Friday, 22 December, residents went out on the bus to see the Christmas lights adorning houses around Traralgon. Three bus trips were required to drive around the excited residents over the two nights with many oohs and ahhs expressed during the tours.

Residents were amazed by the lengths some houses had gone to with lights, blow-up Santas, gingerbread men and even reindeers. Other residents admired the more classic and minimal designs with lights of all different colours.



Christmas Baking

Floury fingers, festive shapes, and shared laughter filled the afternoon air on Tuesday, 19 December, as residents celebrated Christmas with a baking session run by one of our Chefs. Later, teacups clinked as they savoured their homemade shortbread.



Annual Christmas Decorating Competition

Over the Christmas period staff busily decorated the houses in different Christmas themes. A lot of effort and hard work were put into each house. On Monday, 11 December, we had onsite three members of the Village Advisory Committee to judge the decorations within the houses. The judges took an hour to wander through all the houses whilst taking notes and giving scores. Each judge ranked the house on a scale of 1-5.

This year was a very close competition with only one point separating each.

1st place – Acacia (Gingerbread House) 14/15

2nd place – Waratah – (Traditional) 13/15

3rd place – Grevillia (Winter Wonderland) 12/15.

The judges had lovely comments about each house but stated that Acacia was the well-deserved winner with many homemade decorations and that it looked beautiful. House participants also included Banksia East (Green, Gold & Red Theme), Banksia North (Red & White Theme), and Laurel (Candy Cane).

Thank you to all the staff who participated and brought some extra cheer to our residents and the facility. The residents loved going around each house and admiring the different themes. we look forward to seeing what 2024 Christmas house competition will bring.



Judges



Acacia 1st



Waratah 2nd



Grevillia 3rd

Margery Cole Christmas Party & 2023 Christmas Raffle

On Monday, 18 December Yallambee held their annual Christmas concert with guest performance Destiny Band OZ.

As residents were singing along to Christmas carols and having a good time, Santa and Mrs. Claus dropped in for a surprise visit to wish everyone a Merry Christmas and hand out gifts, they even brought along one of their trusty elves! They unfortunately could not stay for long but before they left, they helped with drawing our Christmas hamper winners.

Thank you to everyone who purchased tickets to win one of Yallambee's wonderful Christmas hampers. Two lucky Margery Cole Residents and one Yallambee Village resident, won one of our beautiful hampers each.



Christmas Little Shop

Deck the halls and grab a sweet treat! Come December, the Margery Cole "Little Shop" transformed into a wonderland of warm smiles and merry gift-giving. Residents could delight in scrumptious goodies while finding the perfect festive surprises for friends and family, all adorned with festive wrapping to spread the holiday joy.



Yallambee in the LV Express

Did you see Yallambee in the Express, published on Thursday, 21 December?

Have a look below!

Celebrating Christmas at Yallambee Aged Care

YALLAMBEE, a provider of Aged Care services in Traralgon, at its Margery Cole Residential Care Service facility, is expressing gratitude to its staff this holiday season by presenting each team member with beautifully curated Christmas hampers, from Hampers with Bite, to take home and share with their families.

"At Yallambee, we understand that our staff are the heart of our organisation," stated chief executive officer Alison Snell.

"Their commitment and compassion are what define our brand, and we want to show our appreciation during this festive season."

To celebrate the spirit of Christmas and acknowledge the hard work of its staff, Yallambee has organised a series of events throughout December.

The highlight of these festivities is the Advent Event running over 32 days, where employees have the chance to win daily prizes.

The anticipation amongst staff builds as names are drawn each day, offering employees the opportunity to enjoy a variety of prizes including gift vouchers, chocolates, fresh fruit boxes and other goodies, some graciously donated from our local community, particularly the fruit boxes from Manny's Market, a long-term supporter of Yallambee staff.

Chief executive Ms Snell said, "with the support of our local businesses, such as Manny's Market we are grateful and able to further show our appreciation to our wonderful staff at Yallambee."

In addition to the daily festivities, Yallambee will host a Christmas BBQ on site where its Board Directors have an opportunity to come along to also acknowledge the great work of its staff.

This event will not only serve as a festive gathering but will also be an occasion to honour staff members for their years of service and academic achievements.

Three staff recipient this year will

be recognised for 35 years, 20 years and 15 years of service, and a fellow colleague, recognised for 10 years of service, a personal achievement and shows Yallambee as popular employer in the community. These awards also aim to recognise the contributions of the team at Yallambee contributing to the quality of care and well-being of the residents at Yallambee.

"Our staff are the backbone of our organisation," emphasised Ms Snell.

"We are incredibly fortunate to have such dedicated and caring individuals who go above and beyond in looking after the residents at Margery Cole. This holiday season, we want to extend our deepest thanks and celebrate the exceptional team that makes Yallambee a home for our residents."

Should you like to reach out do not hesitate to contact Yallambee at info@yallambee.com.au



Giving back: Yallambee Traralgon Village for the Aged Inc. spreads festive cheer with Christmas hampers and exciting events for its staff.

Photograph supplied

Yallambee's Christmas Advent Event

This year, Yallambee was pleased to expand the traditional 25 days of Christmas that has been held in previous years. This year we introduced the Christmas Advent Event, which is a festive celebration that spans from 1 December 2023 to 1 January 2024. It is inspired by the traditional Advent Calendar, where each day leading up to Christmas involves a special activity or gift. All staff (rostered to work during this period) had the opportunity to participate in Yallambee's Christmas Advent Event. Staff rostered (all shifts) had their name placed in a basket and a lucky name was drawn each day. The winner had the opportunity to choose from a beautiful selection of carefully curated gifts.

The event aims to spread holiday cheer and create a sense of excitement and anticipation throughout the holiday season. The Christmas Advent Event fosters a sense of community, goodwill and appreciation; bringing people together to celebrate the joy of the season. It's not just about winning or receiving gifts but also about creating shared moments and experiences that add warmth and happiness to the holiday season for everyone involved.



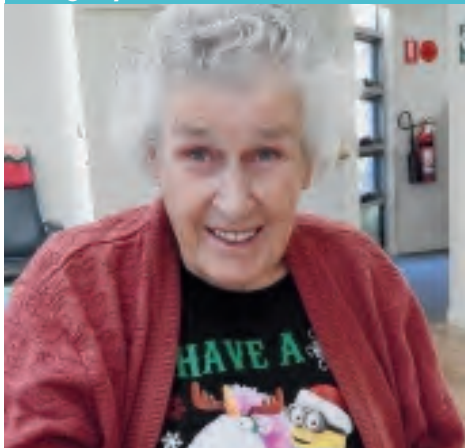




Merry Christmas!

Resident & Staff Spotlight

Glenys Goodwin
Margery Cole Resident



Tony Wood
Staff Member



Ken Mooney
Yallambee Village Resident



Length of time at Yallambee:

6 years

The best thing about living at Yallambee:

Having my garden

The worst thing about living at Yallambee:

Being away from my husband

One thing you don't know about me:

I was a bowls champion

My favourite staff member:

Jenna from Lifestyle

My favourite food:

Lemon marang and I love my milo

My favourite lifestyle activity:

Concerts

Role at Yallambee:

Lifestyle & Wellbeing Assistant

Length of time at Yallambee:

18 months

Job previous to Yallambee:

Store man at Hazelwood for 33 years before Hazelwood a checkout worker and a storeman at coles in Morwell

One thing you don't know about me:

I have a 20 year old son

Favourite pastimes:

Playing chess and boardgames

My favourite food:

Pavlova

Advice to new staff:

Be open minded

Length of time at Yallambee:

11 years

The best thing about living at Yallambee:

Secure, peacefull and close to the bowls club

The worst thing about living at Yallambee:

There are no worse things

One thing you don't know about me:

I am a club coach at the bowls club

Favourite food:

Seafood

Advice to new residents:

Mix with one another. Talk to your neighbour and attend things that are put on by Yallambee

Margery Cole *News*

Intergenerational Playgroup

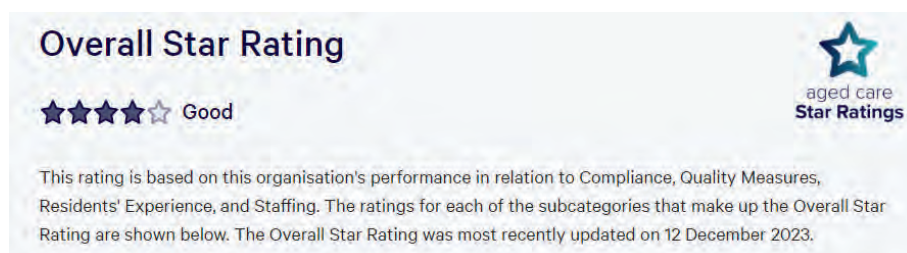
We are excited to announce that our onsite playgroup with Latrobe City will continue on into 2024.

Beginning on Tuesday, 30 January playgroup will resume with a new starting time of 10:00 am.

Nail Salon

Our volunteer-run nail salon will re-commence on Tuesday, 9 January, and will be onsite fortnightly. If you would like to have your nails done simply book in at reception. The nail salon is open to Village residents as well.

Overall Star Rating



Dear Residents,

We would like to take a moment to share with you some recent efforts and initiatives aimed at ensuring the highest level of care and support for our wonderful community.

We are proud to inform you that our commitment to providing exceptional care has earned us the highest Personal Care Worker minutes and Registered Nursing minutes in Gippsland, resulting in a 5-star staffing rating from My Aged Care. It's important to note that these minutes are calculated based on the wages paid to our dedicated staff.

In December 2022, the Australian Government introduced Star Ratings for aged care homes. Star Ratings provide simple information about the quality of care an aged care home delivers and how they compare to others.



Margery Cole News Continued

How are Star Ratings calculated?

Star Ratings for aged care homes are a simple way of showing the quality of care at an aged care home and how they compare to others. All aged care homes across Australia receive a rating between 1 and 5 stars to indicate their quality of care across 4 key areas of performance; compliance, quality measures, residents' experience and staffing. Outcomes in these 4 subcategories inform an overall Star Rating.

Click here for more info [Calculating the Star Ratings](#) | [My Aged Care](#)

The Staffing Rating is based on the delivery of nursing and personal care in an aged care home compared to their care targets for:

- the total amount of nursing and personal care time a resident receives from a registered nurse, enrolled nurse and personal care worker, and
- the care time a resident receives from a registered nurse only.
- Staffing minutes are derived from reporting under the Quarterly Financial Report and Annual Financial report, case-mix adjusted through the Australian National Aged Care Classification and reported quarterly.

First and foremost, we want to reassure you that we maintain a full roster of dedicated staff every day, all of whom work tirelessly to make our community a great place to live. We understand that there may be concerns about staffing levels, and we want to clarify that any mention of working short is typically related to unplanned staff sick leave. Rest assured, we are actively addressing this issue to minimise any impact on the quality of care and your overall experience.

To address this challenge, we are proactively collaborating with our staff to manage and reduce excessive leave. Open communication is at the core of our approach, and we are having discussions with our team members to ensure they can fulfill the commitments they have accepted. This will contribute to a more stable and consistent roster.

In addition, we are taking steps to roster extra staff on shifts that may be challenging to fill. This proactive approach allows us to respond to unexpected changes and ensures that there is ample support in place for your needs.

In the rare event that we encounter difficulties filling a shift, please know that we have comprehensive contingency plans in place. We are committed to working together as a team, reaching out to other areas for assistance, and, if necessary, asking afternoon shifts to come in early or night shifts to stay back. Your well-being is our top priority, and we are dedicated to addressing any challenges promptly and effectively.

Your understanding, and trust as we navigate these operational aspects are deeply appreciated. Our goal is not only to make this a great place to live but also a great place to work. Your feedback is invaluable, and if you have any concerns or suggestions, please feel free to reach out to us.

Thank you for being an integral part of our community. We are here for you, and together, we will continue to make this a warm and welcoming home.

Sincerely,



Alison Snell
Chief Executive Officer

Village *News*

Village Units For Sale

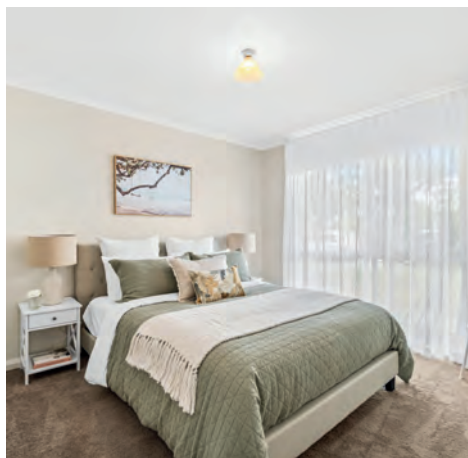
Our refurbished units are now available for sale, we currently have one and two-bedroom options available. Please contact the Customer Engagement Team for further information, or to organise a tour, on 5132 3500 or email info@yallambee.com.au

Here are some photos of two of our referbished units – 50 and 92

Unit 92



Unit 50



Village Bus Trips

Village bus trips to the Traralgon Plaza

Depart 11:00 am

Return 1:00 pm

- Wednesday, 17 January
- Wednesday, 31 January

Don't forget to pre-book your seat with at least one days notice at Reception.

Staff News

New Staff - November

Welcome to all new staff!

Personal Care Worker

Carley Van Der Pluym

Racheal Casey

Selina Hogan

Catering

Ar Jay Sanchez

Catering/Admin

Ella Snell

Bella Watts

Welcome!

Star of the Month - Deanna Bourke



Here is what Deanna's colleague had to say:

- Deanna is very helpful, she goes out of her way to make sure the residents are not only well looked after but comfortable and happy as well. Deanna always helps other staff when they need assistance and she makes families of the residents feel welcome, and that their family members are being well looked after. Deanna makes working in Banskia North a much happier and more pleasant area to work in.

Star of the Month!



Mon	Tue	Wed	Thu	Fri	Sat	Sun
1 10:15 Movers & Shakers G 10:45 Brain Teasers G 1:30 Active Games G 3:30 1:1s H	2 10:15 Movers & Shakers H 10:45 Brain Teasers H 1:30 Craft & Knitter Natter G 3:00 Little Shop CBD	3 10:15 House Meeting H 10:30 Movers & Shakers H 10:45 Brain Teasers H 1:30 Bingo G 3:30 1:1s H	4 10:15 Movers & Shakers H 10:45 Brain Teasers H 1:30 Bill Bishop Concert G 3:30 1:1s H	5 10:15 Walk Around H 10:45 Brain Teasers H 10:45 Anglican Church G 1:30 Happy Hour A 1:30 Mystery drive F	6 Weekend Program 10:15 Combined Exercises Program Atrium 1:30 Combined Group Activity Atrium	7 Weekend Program 10:15 Combined Exercises Program Atrium 1:30 Combined Group Activity Atrium
8 10:15 Walking H 1:30 Carpet Bowls G 1:30 Golf G 3:30 1:1s H	9 10:15 Movers & Shakers H 10:45 Brain Teasers H 1:30 Elvis Presley's Birth-day & 1950's reminisce G 3:00 Little Shop CBD	10 10:15 House Meeting H 10:30 Movers & Shakers H 10:45 Brain Teasers H 1:30 Bingo G 3:30 1:1s H	11 10:15 Movers & Shakers H 10:45 Brain Teasers H 1:30 Songs of Praise G 3:30 1:1s H	12 10:15 Walk Around H 10:45 Brain Teasers G 1:30 Happy Hour A 1:30 Mystery drive F	13 Weekend Program 10:15 Combined Exercises Program Atrium 1:30 Combined Group Activity Atrium	14 Weekend Program 10:15 Combined Exercises Program Atrium 1:30 Combined Group Activity Atrium
15 10:15 Walking H 1:30 The Yallabee Open Tennis Competition G 3:30 1:1s H	16 10:15 Movers & Shakers H 10:45 Brain Teasers H 10:45 Catholic Church G 1:30 Australia Day Craft G 3:00 Little Shop CBD	17 10:15 House Meeting H 10:30 Movers & Shakers H 10:45 Brain Teasers H 1:30 Bingo G 3:30 1:1s H	18 10:15 Movers & Shakers H 10:45 Brain Teasers H 1:30 Singing with Tess G 3:30 1:1s H	19 10:15 Walk Around H 10:45 Brain Teasers G 1:30 Happy Hour A 1:30 Mystery drive F	20 Weekend Program 10:15 Combined Exercises Program Atrium 1:30 Combined Group Activity Atrium	21 Weekend Program 10:15 Combined Exercises Program Atrium 1:30 Combined Group Activity Atrium
22 10:15 Walking H 1:30 Carpet Bowls G 1:30 Golf G 3:30 1:1s H	23 10:15 Movers & Shakers H 10:45 Brain Teasers H 1:30 Lifestyle Australia Day Concert G 3:00 Little Shop CBD	24 10:15 House Meeting H 10:30 Movers & Shakers H 10:45 Brain Teasers H 1:30 Bingo G 3:30 1:1s H	25 10:15 Movers & Shakers H 10:45 Brain Teasers H 1:30 Australian Music Sing-along 3:30 1:1s H	26 10:15 Movers & Shakers G 10:45 Brain Teasers G 1:30 Australia Day Happy Hour A	27 Weekend Program 10:15 Combined Exercises Program Atrium 1:30 Combined Group Activity Atrium	28 Weekend Program 10:15 Combined Exercises Program Atrium 1:30 Combined Group Activity Atrium
29 10:15 Walking H 1:30 Active Games G 1:30 Golf G 3:30 1:1s H	30 10:00 Playgroup G 1:30 Midvalley Shopping F 1:30 Craft & Knitter Natter G 3:00 Little Shop CBD	31 10:15 House Meeting H 10:30 Movers & Shakers H 10:45 Brain Teasers H 1:30 Bingo G 3:30 1:1s H	<div>2024</div>			<div> Location Key H - Houses G - Grevillia Lounge A - Atrium Lounge B - Banksia North Lounge CBD - Central Area F - Foyer </div>

Please note due to limited places, Mystery drives and Midvalley outings are for Margery Cole Residents only



YALLAMBEE VILLAGE ICE - CREAM CART

**STARTING EVERY SECOND
THURSDAY
BEGINNING ON THE 18TH JAN
1:30PM**

LISTEN FOR THE BELL AND MUSIC

PRICE LIST



**BULLA VANILLA DIXIE
CUP \$2.50**



**BULLA CHOC &
VANILLA ICE-CREAM
STICK \$3.50**



**LEMON/MANGO/
RASBERRY SPLICE \$2.50**



DRUM STICK \$3.50

DON'T MISS OUT!

NAIL SALON

Yallambee



Tuesdays Fortnightly

9:15am - 2:00pm

Speak to Reception for Bookings

Open to both Margery Cole and Village Residents

YALLAMBEE'S

Australia Day!



CONCERT

With live
performances from
The Seekers
Daddy Cool

AND MORE!

2024

Tuesday, 23 January

1:30pm Grevillia Lounge



Live at ease.

Yallambee Traralgon Village for the Aged Inc.

ABN: 43 287 362 778

Matthews Crescent, Traralgon Vic 3844

(03) 5132 3500



info@yallambee.com.au

yallambee.com.au



Yallambee Traralgon